

# JUNO

SUSPENDED LUMINAIRE

With the addition of the suspended luminaire, the JUNO product family is a strong trio. The luminaire that received an award for the successful combination of design and directional lighting control supplies outstanding retail lighting in every design version. In addition, it can be used as an allrounder for the complete shop lighting: ambient lighting, assortment lighting, and aisle lighting with the TWIN variant, or accentuation of the counter and tables can also be achieved in a tailor-made manner with this luminaire. The hallmark of the JUNO, its visible and nevertheless dazzle-free light at the free-form lens, can be more directly experienced with the suspended luminaire.



**Optimum light distribution**

Accurate directional lighting control of free-form lens thanks to Oktalite reflector



**Ideal applications**

Suspended luminaire plus track-mounted spotlight – allrounder lighting for goods and architecture



**New design language**

Filigree, elegant appearance, and exciting long-distance effect thanks to the lens in droplet shape



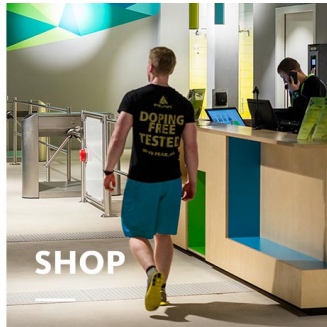
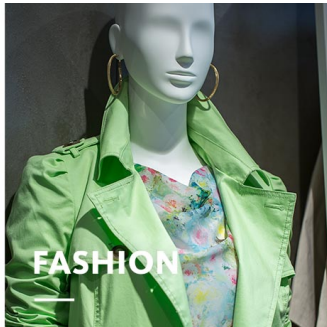
**Easy alignment**

Fine adjustment of the pendulum length on the ceiling fixture from 0 to 1.5 metres or 1.5 to 3 metres



**Intelligent lighting**

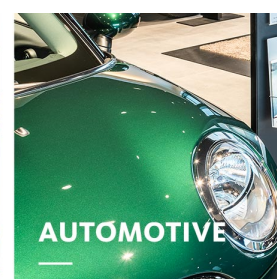
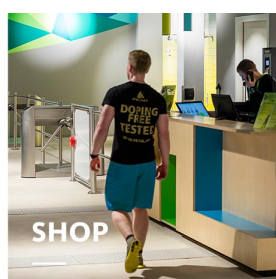
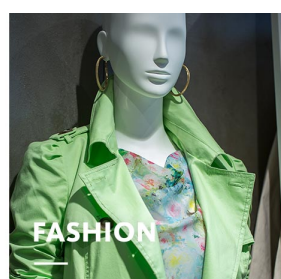
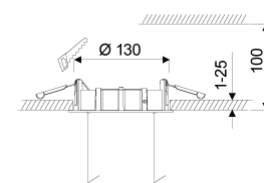
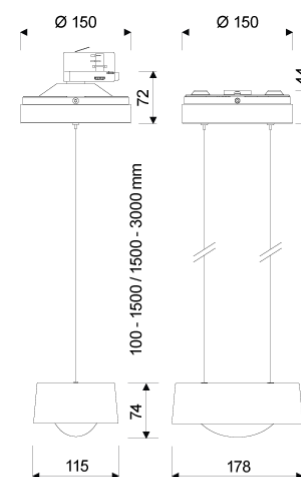
Simply digital: LED<sup>IQ</sup> makes lighting control really easy



# JUNO

[www.oktalite.com/juno-p](http://www.oktalite.com/juno-p)

Type of luminaire	suspended luminaire
Application areas	Decorative lighting
Pan/tilt range	fixed
Mounting	3P Power Track, recessed (Ø 130mm), Surface mounted
Ceiling thickness	1 - 25 mm
Lighting technology	LED <sup>IQ</sup> BLE
LED Luminous Flux Class	3000 lm - 4000 lm
Light colour White	2700 K, 3000 K, 3000 K - Efficient White, 3000 K - Brilliant Colour, 3500 K, 4000 K
Light colour Food*	BF
Cooling	passive
Supply unit	BLE-Driver separate / integrated
Luminaire colour	RAL 9005 jet black RAL 9006 white aluminium RAL 9016 traffic white Special colours on request
Surface	structure powder-coated
Suspension length	1500mm, 3000mm
Nominal voltage	220 - 240 V, 50/60Hz
Lighting controls	Bluetooth Low Energy
Installation	Recommended for modernization or new installation. In a BLE network up to 127 luminaires can be coupled. A stable Bluetooth connection depends on the particular local situation. In the case of this luminaire type it amounts to up to 25m (recessed) / 7.5m (surface mounted).
Weight	Approx. 2.2 kg



Components



Luminaire housing



Supply unit

Test seal



\* BF = Brilliant Food

Technical details as well as weight specifications and measurements have been prepared with care. Errors excepted. All dimensions in mm · LED service life data: L80/B10 at ambient temperature (ta) 25°C. Rated lamp service life 50,000h. Luminous flux and efficiency specifications are subject to a tolerance of /- 10%. Min CRI Ra: >80 / >90· Product images are used as an example and may differ from the original · We reserve the right to make changes, insofar as they serve progress. The Single Lighting Regulation (SLR) documentation can be found in our download area. Oktalite Lichttechnik GmbH · Mathias-Brüggen-Str. 73 · 50829 Cologne · T 49 221 59767-0 · F 49 221 59767-40 · mail@oktalite.com · www.oktalite.com · 2023-11-23



Luminaire housing - LED<sup>IQ</sup> BLE

# JUNO

# oktalite

Mounting 3P Power Track H11  
Supply unit integrated



LED Luminous Flux Class	Light colour	CRI R <sub>a</sub>	system luminous flux*	System performance	Suspension length	Order number		
						white	silver	black
3000 lm	3000 K - Brilliant Colour	> 95	2810 lm	34 W	1500mm	10232310	10232311	10232312
3000 lm	3000 K - Brilliant Colour	> 95	2810 lm	35 W	3000mm	10232313	10232314	10232315
4000 lm	2700 K	> 80	3620 lm	30 W	1500mm	10232292	10232293	10232294
4000 lm	2700 K	> 80	3620 lm	31 W	3000mm	10232295	10232296	10232297
4000 lm	3000 K	> 80	3720 lm	30 W	1500mm	10232298	10232299	10232300
4000 lm	3000 K	> 80	3720 lm	31 W	3000mm	10232301	10232302	10232303
4000 lm	3000 K - Efficient White	> 90	3785 lm	36 W	1500mm	10232304	10232305	10232306
4000 lm	3000 K - Efficient White	> 90	3785 lm	38 W	3000mm	10232307	10232308	10232309
4000 lm	3500 K	> 80	3795 lm	30 W	1500mm	10232316	10232317	10232318
4000 lm	3500 K	> 80	3795 lm	31 W	3000mm	10232319	10232320	10232321
4000 lm	4000 K	> 80	3920 lm	30 W	1500mm	10232322	10232323	10232324
4000 lm	4000 K	> 80	3920 lm	31 W	3000mm	10232325	10232326	10232327
3000 lm	BF	> 95	2790 lm	32 W	1500mm	10232328	10232329	10232330
3000 lm	BF	> 95	2790 lm	33 W	3000mm	10232331	10232332	10232333

Technical details as well as weight specifications and measurements have been prepared with care. Errors excepted. All dimensions in mm · LED service life data: L80/B10 at ambient temperature (ta) 25°C. Rated lamp service life 50,000h. Luminous flux and efficiency specifications are subject to a tolerance of +/- 10%. Min CRI Ra: >80 / >90· Product images are used as an example and may differ from the original · We reserve the right to make changes, insofar as they serve progress. The Single Lighting Regulation (SLR) documentation can be found in our download area. Oktalite Lichttechnik GmbH · Mathias-Brüggen-Str. 73 · 50829 Cologne · T 49 221 59767-0 · F 49 221 59767-40 · mail@oktalite.com · www.oktalite.com · 2023-11-23

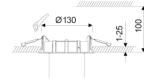


Luminaire housing - LED<sup>IQ</sup> BLE

# JUNO

# oktalite

Mounting recessed H14 (Ø 130mm)  
Supply unit separate



LED Luminous Flux Class	Light colour	CRI R <sub>a</sub>	system luminous flux*	System performance	Suspension length	Order number		
						white	silver	black
3000 lm	3000 K - Brilliant Colour	> 95	2810 lm	34 W	1500mm	10235208	10235209	10235210
4000 lm	2700 K	> 80	3620 lm	30 W	1500mm	10232130	10232131	10232132
4000 lm	3000 K	> 80	3720 lm	30 W	1500mm	10232136	10232137	10232138
4000 lm	3000 K - Efficient White	> 90	3785 lm	36 W	1500mm	10232142	10232143	10232144
4000 lm	3500 K	> 80	3795 lm	30 W	1500mm	10232148	10232149	10232150
4000 lm	4000 K	> 80	3920 lm	30 W	1500mm	10232154	10232155	10232156
3000 lm	BF	> 95	2790 lm	32 W	1500mm	10232160	10232161	10232162

Technical details as well as weight specifications and measurements have been prepared with care. Errors excepted. All dimensions in mm · LED service life data: L80/B10 at ambient temperature (ta) 25°C. Rated lamp service life 50,000h. Luminous flux and efficiency specifications are subject to a tolerance of +/- 10%. Min CRI Ra: >80 / >90 · Product images are used as an example and may differ from the original · We reserve the right to make changes, insofar as they serve progress. The Single Lighting Regulation (SLR) documentation can be found in our download area. Oktalite Lichttechnik GmbH · Mathias-Brüggen-Str. 73 · 50829 Cologne · T 49 221 59767-0 · F 49 221 59767-40 · mail@oktalite.com · www.oktalite.com · 2023-11-23



Luminaire housing - LED<sup>IQ</sup> BLE

# JUNO

# oktalite

Mounting  
Supply unit

Surface mounted H20  
integrated



LED Luminous Flux Class	Light colour	CRI R <sub>a</sub>	system luminous flux*	System performance	Suspension length	Order number		
						white	silver	black
3000 lm	3000 K - Brilliant Colour	> 95	2810 lm	34 W	1500mm	10232352	10232353	10232354
3000 lm	3000 K - Brilliant Colour	> 95	2810 lm	35 W	3000mm	10232355	10232356	10232357
4000 lm	2700 K	> 80	3620 lm	30 W	1500mm	10232334	10232335	10232336
4000 lm	2700 K	> 80	3620 lm	31 W	3000mm	10232337	10232338	10232339
4000 lm	3000 K	> 80	3720 lm	30 W	1500mm	10232340	10232341	10232342
4000 lm	3000 K	> 80	3720 lm	31 W	3000mm	10232343	10232344	10232345
4000 lm	3000 K - Efficient White	> 90	3785 lm	36 W	1500mm	10232346	10232347	10232348
4000 lm	3000 K - Efficient White	> 90	3785 lm	38 W	3000mm	10232349	10232350	10232351
4000 lm	3500 K	> 80	3795 lm	30 W	1500mm	10232358	10232359	10232360
4000 lm	3500 K	> 80	3795 lm	31 W	3000mm	10232361	10232362	10232363
4000 lm	4000 K	> 80	3920 lm	30 W	1500mm	10232364	10232365	10232366
4000 lm	4000 K	> 80	3920 lm	31 W	3000mm	10232367	10232368	10232369
3000 lm	BF	> 95	2790 lm	32 W	1500mm	10232370	10232371	10232372
3000 lm	BF	> 95	2790 lm	33 W	3000mm	10232373	10232374	10232375



Efficient White: R<sub>9</sub> = 75, R<sub>r</sub> = 91, R<sub>g</sub> = 102



Brilliant Colour: R<sub>9</sub> = 94, R<sub>r</sub> = 95, R<sub>g</sub> = 104

Technical details as well as weight specifications and measurements have been prepared with care. Errors excepted. All dimensions in mm · LED service life data: L80/B10 at ambient temperature (ta) 25°C. Rated lamp service life 50,000h. Luminous flux and efficiency specifications are subject to a tolerance of +/- 10%. Min CRI Ra: >80 / >90 · Product images are used as an example and may differ from the original · We reserve the right to make changes, insofar as they serve progress. The Single Lighting Regulation (SLR) documentation can be found in our download area. Oktalite Lichttechnik GmbH · Mathias-Brüggen-Str. 73 · 50829 Cologne · T 49 221 59767-0 · F 49 221 59767-40 · mail@oktalite.com · www.oktalite.com · 2023-11-23

# Optic Juno - LED IQ BLE

# oktalite

Optic Freeform lens  
 Type Optic integrated

## Beam angle

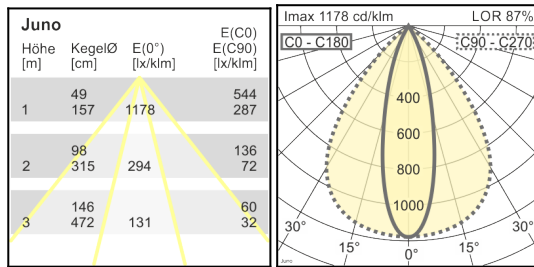
### Oval light distribution

Cover

LOR

without

87 %



Technical details as well as weight specifications and measurements have been prepared with care. Errors excepted. All dimensions in mm · LED service life data: L80/B10 at ambient temperature (ta) 25°C. Rated lamp service life 50,000h. Luminous flux and efficiency specifications are subject to a tolerance of +/- 10%. Min CRI Ra: >80 / >90 · Product images are used as an example and may differ from the original · We reserve the right to make changes, insofar as they serve progress. The Single Lighting Regulation (SLR) documentation can be found in our download area. Oktalite Lichttechnik GmbH · Mathias-Brüggen-Str. 73 · 50829 Cologne · T 49 221 59767-0 · F 49 221 59767-40 · mail@oktalite.com · www.oktalite.com · 2023-11-23



Supply unit - LED<sup>IQ</sup> BLE

## BLE-Driver

# oktalite

Version	Independent control gear
Mains connection	GST 18i3
Cable length secondary	400 mm
Nominal voltage	220 - 240 V, 50/60Hz
Lighting controls	Bluetooth Low Energy
Lighting technology	LED <sup>IQ</sup> BLE

Lighting technology	Luminaire connection	Output	System performance	max. luminaires B16	Order number
LED IQ BLE	RNV	750 mA	30 W	20	10239584
LED IQ BLE	RNV	800 mA	32 W	50	10207880
LED IQ BLE	RNV	850 mA	34 W	50	10210601
LED IQ BLE	RNV	900 mA	36 W	50	10210602

Technical details as well as weight specifications and measurements have been prepared with care. Errors excepted. All dimensions in mm · LED service life data: L80/B10 at ambient temperature (ta) 25°C. Rated lamp service life 50,000h. Luminous flux and efficiency specifications are subject to a tolerance of +/- 10%. Min CRI Ra: >80 / >90 · Product images are used as an example and may differ from the original · We reserve the right to make changes, insofar as they serve progress. The Single Lighting Regulation (SLR) documentation can be found in our download area. Oktalite Lichttechnik GmbH · Mathias-Brüggen-Str. 73 · 50829 Cologne · T 49 221 59767-0 · F 49 221 59767-40 · mail@oktalite.com · www.oktalite.com · 2023-11-23