



## AGIRA PLUS

### RECESSED LUMINAIRES

As a high-performance recessed directional LED spotlight, AGIRA PLUS rounds off the portfolio – in that way concepts with different ceiling heights and area sizes can be easily implemented with one luminaire type. The spotlights can be turned through 355° and tilted in two directions through 30° in each case – which is ideal for targeted and flexible illumination of goods. AGIRA PLUS combines the advantages of a gimbal-mounted luminaire with those of a classic recessed spotlight. Optionally fitted with the ACTIVE LED module. This makes the precise adjustment of the light possible as regards intensity and colour temperature.



#### **Ideal application range**

Optimum use in the case of great ceiling heights



#### **Uncluttered ceiling pattern and high flexibility**

Turning through 355°, tilting in both directions through 30°, makes optimum luminaire alignment and light directing possible.



#### **Extensive variety**

Our white light colours and special light colours for the fresh area are available for selection



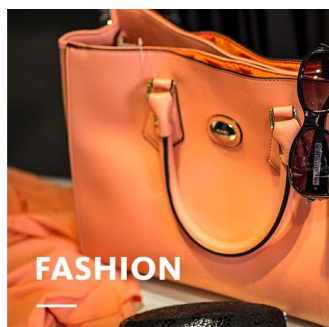
#### **Practical installation**

Tool-free installation thanks to simple spring mechanism



#### **Intelligent light**

Smart lighting management optionally with control line or wireless



## AGIRA PLUS

[www.oktalite.com/agira-plus](http://www.oktalite.com/agira-plus)

Luminaire type	Recessed luminaires
Application areas	Base illumination, accent lighting
Range of action	Can be rotated through 355° and swiveled through 90
Fastening	Spring fastening (angle fastening)
Ceiling thickness	1-25 mm
Ceiling cut-out	175 mm
Lighting technology	LED, LED IQ DALI, LED IQ BLE
Beam angel	Spot, Medium Flood, Flood, Wide Flood, Very Wide Flood
LED luminous flux class	1500 lm - 7000 lm
Light colour CRI 80	2700 K, 3000 K, 3500 K, 4000 K
Light colour CRI 90	3100 K - Brilliant Colour, 3200 K - Efficient White, 4000 K - Efficient Cool
Light colour Food	2700 K - Brilliant Food, Meat, Meat + Fish
Variable light colour	Tunable Meat, Active (2700 K - 6500 K)
Supply unit	Integrated driver
	RAL 9005 jet black
Luminaire colour	RAL 9006 white aluminum RAL 9016 traffic white Special colours on request
Surface	Structure powder-coated
Nominal voltage	220 - 240 V, 50/60Hz
Weight	approx. 1.3 kg
Test mark	