



JUNO TWIN

TRACK LIGHT



Optimum light distribution

By means of novel directional lighting control with a free-form lens instead of a reflector



Ideal applications

Systematic illumination of goods in the assortment aisles



New design language

With visible, teardrop-shaped lens and significant long-distance effect



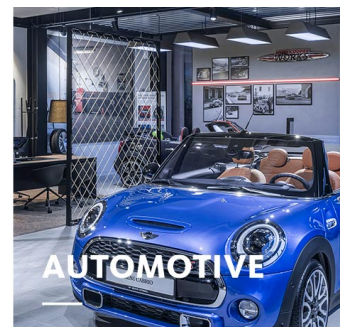
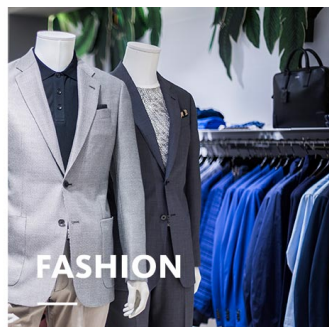
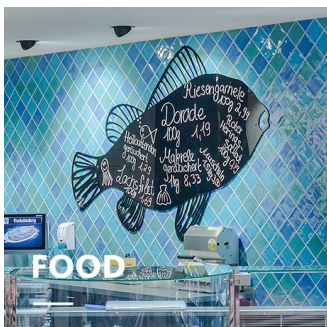
Easy alignment

Each Spotlight head can be swivelled through up to 40°; easy, precise adjustment thanks to scale



Intelligent lighting






LED^{IQ} for smart lighting management



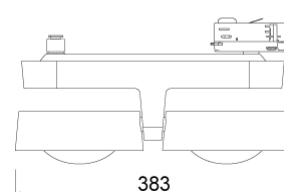
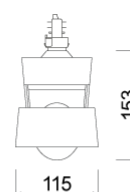
JUNO TWIN

oktalite

www.oktalite.com/juno-twin-t

Type of luminaire	track light
Application areas	Aisle zone illumination, base illumination
Pan/tilt range	80° swivel range
Mounting	3P Power Track Typ Global DALI, not suitable for vertical mounting
Lighting technology	LED ^{IQ} DALI
LED Luminous Flux Class	5000 lm
Light colour White	2700 K, 3000 K, 3000 K - Efficient White, 3500 K, 4000 K, 4000 K - Efficient Cool
Cooling	passive
Supply unit	DALI driver integrated
Luminaire colour	RAL 9005 jet black RAL 9006 white aluminium RAL 9016 traffic white Special colours on request
Surface	structure powder-coated
Nominal voltage	220 - 240 V, 50/60Hz
Lighting controls	DALI DT6
Installation	Recommended for new installation.
Weight	Approx. 3.2 kg
Components	 Luminaire housing
Test seal	   

LED^{IQ} DALI



Technical details as well as weight specifications and measurements have been prepared with care. Errors excepted. All dimensions in mm · LED service life data: L80/B10 at ambient temperature (ta) 25°C. Rated lamp service life 50,000h. Luminous flux and efficiency specifications are subject to a tolerance of +/- 10%. Min CRI Ra: >80 / >90· Product images are used as an example and may differ from the original · We reserve the right to make changes, insofar as they serve progress. The Single Lighting Regulation (SLR) documentation can be found in our download area. Oktalite Lichttechnik GmbH · Mathias-Brüggen-Str. 73 · 50829 Cologne · T 49 221 59767-0 · F 49 221 59767-40 · mail@oktalite.com · www.oktalite.com · 2022-11-29



JUNO TWIN

oktalite

LED Luminous Flux Class	Light colour	CRI R _a	system luminous flux	System performance	max. luminaires B16	Order number		
						white	silver	black
5000 lm	2700 K	> 80	2 x 4375 lm	72 W	25	10221495	10221496	10221497
	3000 K	> 80	2 x 4495 lm	72 W	25	10221498	10221499	10221500
	3000 K - Efficient White	> 90	2 x 4710 lm	92 W	10	10221501	10221502	10221503
	3500 K	> 80	2 x 4585 lm	72 W	25	10221504	10221505	10221506
	4000 K	> 80	2 x 4735 lm	72 W	25	10221507	10221508	10221509
	4000 K - Efficient Cool	> 90	2 x 4995 lm	92 W	10	10249831	10249832	10249833



Efficient White: R_s = 75, R_f = 91, R_g = 102

Technical details as well as weight specifications and measurements have been prepared with care. Errors excepted. All dimensions in mm · LED service life data: L80/B10 at ambient temperature (ta) 25°C. Rated lamp service life 50,000h. Luminous flux and efficiency specifications are subject to a tolerance of +/- 10%. Min CRI Ra: >80 / >90 · Product images are used as an example and may differ from the original · We reserve the right to make changes, insofar as they serve progress. The Single Lighting Regulation (SLR) documentation can be found in our download area. Oktalite Lichttechnik GmbH · Mathias-Brüggen-Str. 73 · 50829 Cologne · T 49 221 59767-0 · F 49 221 59767-40 · mail@oktalite.com · www.oktalite.com · 2022-11-29



Optic Juno - LED ^{IQ} DALI

oktalite

Optic

Freeform lens

Type

Optic integrated

Beam angle

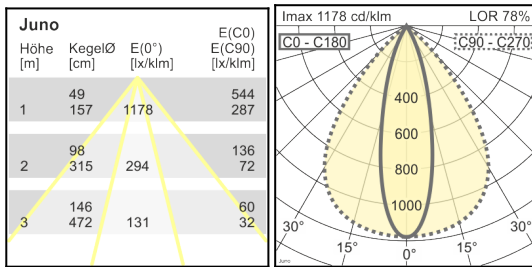
Oval light distribution

Cover

LOR

without

87 %



Technical details as well as weight specifications and measurements have been prepared with care. Errors excepted. All dimensions in mm · LED service life data: L80/B10 at ambient temperature (ta) 25°C. Rated lamp service life 50,000h. Luminous flux and efficiency specifications are subject to a tolerance of +/- 10%. Min CRI Ra: >80 / >90 · Product images are used as an example and may differ from the original · We reserve the right to make changes, insofar as they serve progress. The Single Lighting Regulation (SLR) documentation can be found in our download area. Oktalite Lichttechnik GmbH · Mathias-Brüggen-Str. 73 · 50829 Cologne · T 49 221 59767-0 · F 49 221 59767-40 · mail@oktalite.com · www.oktalite.com · 2022-11-29