



CANILO

SUSPENDED LUMINAIRE

CANILO is characterised by classic, elegant design and provides a special element for supporting the customer's CI: the lateral bracket can be adjusted colour-wise to customise it. The set-back reflector with an integrated anti-glare ring provides a high degree of visual comfort. The variable suspension that can be adjusted without tools and is in the form of a live wire imparts an elegant look to the suspended luminaire.



Customised style

The lateral lug can be adapted colour-wise to customer's CI



Uniform effect

The suspension and the lug specify the mounting direction and in the case of several luminaires ensure a calm overall appearance.



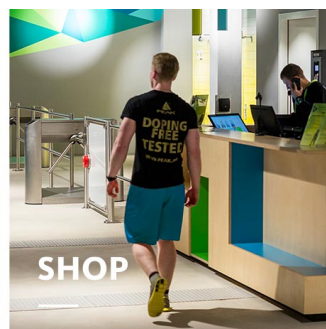
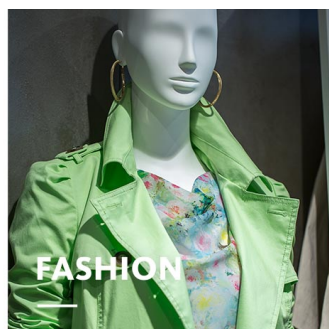
Various fastening possibilities

As a means of fastening a ceiling canopy, a ceiling roundel or an adapter for attachment to power tracks are available



High degree of visual comfort

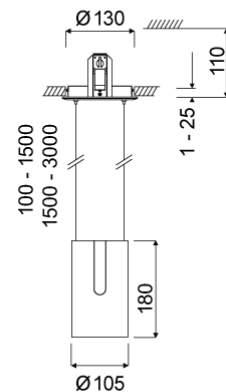
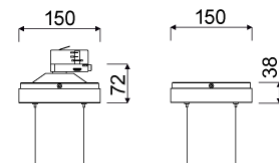
Set-back reflector ensures good glare suppression without any loss of light



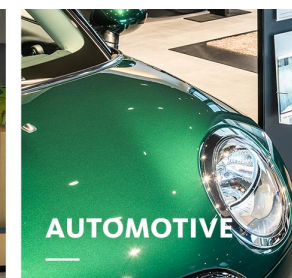
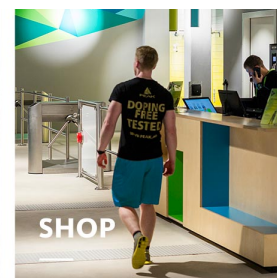
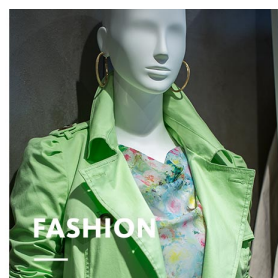
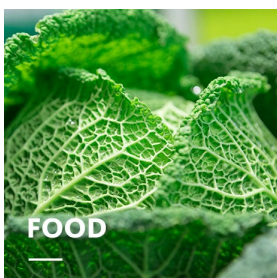
CANILO

www.oktalite.com/canilo-p

Type of luminaire	suspended luminaire
Application areas	Accent lighting
Pan/tilt range	fixed
Mounting	3P Power Track Typ Global DALI, recessed, Surface mounted
Ceiling thickness	1 - 25 mm
Lighting technology	LED ^{IQ} DALI
LED Luminous Flux Class	3000 lm - 4000 lm
Light colour White	2700 K, 3000 K, 3000 K - Efficient White, 3000 K - Brilliant Colour, 3500 K, 4000 K - Efficient Cool
Cooling	passive
Supply unit	DALI driver separate / integrated
Luminaire colour	RAL 9005 jet black RAL 9006 white aluminium RAL 9016 traffic white Special colours on request
Surface	structure powder-coated
Suspension length	1500mm, 3000mm
Nominal voltage	220 - 240 V, 50/60Hz
Lighting controls	DALI DT6
Installation	Recommended for new installation.
Weight	Approx. 2.0 kg



- Components
-  Luminaire housing
 -  Optic
 -  Supply unit



Test seal



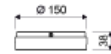
Technical details as well as weight specifications and measurements have been prepared with care. Errors excepted. All dimensions in mm · LED service life data: L80/B10 at ambient temperature (ta) 25°C. Rated lamp service life 50,000h. Luminous flux and efficiency specifications are subject to a tolerance of /- 10%. Min CRI Ra: >80 / >90· Product images are used as an example and may differ from the original · We reserve the right to make changes, insofar as they serve progress. The Single Lighting Regulation (SLR) documentation can be found in our download area. Oktalite Lichttechnik GmbH · Mathias-Brüggen-Str. 73 · 50829 Cologne · T 49 221 59767-0 · F 49 221 59767-40 · mail@oktalite.com · www.oktalite.com · 2023-10-24



Luminaire housing - LED IQ DALI

CANILO

oktalite

Mounting
Supply unitSurface mounted H11
integrated

LED Luminous Flux Class	Light colour	CRI R _a	system luminous flux*	System performance	Suspension length	Order number		
						white	silver	black
3000 lm	3000 K - Brilliant Colour	97	2700 lm	37 W	1500mm	10226791	10226792	10226793
3000 lm	3000 K - Brilliant Colour	97	2700 lm	38 W	3000mm	10226794	10226795	10226796
4000 lm	2700 K	81	3445 lm	33 W	1500mm	10226797	10226798	10226799
4000 lm	2700 K	81	3445 lm	34 W	3000mm	10226800	10226801	10226802
4000 lm	3000 K	83	3585 lm	33 W	1500mm	10226803	10226804	10226805
4000 lm	3000 K	83	3585 lm	34 W	3000mm	10226806	10226807	10226808
4000 lm	3000 K - Efficient White	94	3560 lm	39 W	1500mm	10226809	10226810	10226811
4000 lm	3000 K - Efficient White	94	3560 lm	41 W	3000mm	10226812	10226813	10226814
4000 lm	3500 K	84	3660 lm	33 W	1500mm	10226815	10226816	10226817
4000 lm	3500 K	84	3660 lm	34 W	3000mm	10226818	10226819	10226820
4000 lm	4000 K - Efficient Cool	91	3805 lm	39 W	1500mm	10249607	10249608	10249609
4000 lm	4000 K - Efficient Cool	91	3805 lm	41 W	3000mm	10249610	10249611	10249612

Technical details as well as weight specifications and measurements have been prepared with care. Errors excepted. All dimensions in mm · LED service life data: L80/B10 at ambient temperature (ta) 25°C. Rated lamp service life 50,000h. Luminous flux and efficiency specifications are subject to a tolerance of +/- 10%. Min CRI Ra: >80 / >90· Product images are used as an example and may differ from the original · We reserve the right to make changes, insofar as they serve progress. The Single Lighting Regulation (SLR) documentation can be found in our download area. Oktalite Lichttechnik GmbH · Mathias-Brüggen-Str. 73 · 50829 Cologne · T 49 221 59767-0 · F 49 221 59767-40 · mail@oktalite.com · www.oktalite.com · 2023-10-24

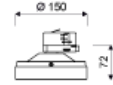


Luminaire housing - LED^{IQ} DALI

CANILO

oktalite

Mounting 3P Power Track H11
Supply unit integrated



LED Luminous Flux Class	Light colour	CRI R _a	system luminous flux*	System performance	Suspension length	Order number		
						white	silver	black
3000 lm	3000 K - Brilliant Colour	97	2700 lm	37 W	1500mm	10226755	10226756	10226757
3000 lm	3000 K - Brilliant Colour	97	2700 lm	38 W	3000mm	10226758	10226759	10226760
4000 lm	2700 K	81	3445 lm	33 W	1500mm	10226761	10226762	10226763
4000 lm	2700 K	81	3445 lm	34 W	3000mm	10226764	10226765	10226766
4000 lm	3000 K	83	3585 lm	33 W	1500mm	10226767	10226768	10226769
4000 lm	3000 K	83	3585 lm	34 W	3000mm	10226770	10226771	10226772
4000 lm	3000 K - Efficient White	94	3560 lm	39 W	1500mm	10226773	10226774	10226775
4000 lm	3000 K - Efficient White	94	3560 lm	41 W	3000mm	10226776	10226777	10226778
4000 lm	3500 K	84	3660 lm	33 W	1500mm	10226779	10226780	10226781
4000 lm	3500 K	84	3660 lm	34 W	3000mm	10226782	10226783	10226784
4000 lm	4000 K - Efficient Cool	91	3805 lm	39 W	1500mm	10249589	10249590	10249591
4000 lm	4000 K - Efficient Cool	91	3805 lm	41 W	3000mm	10249592	10249593	10249594

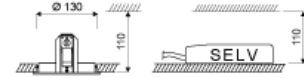
Technical details as well as weight specifications and measurements have been prepared with care. Errors excepted. All dimensions in mm · LED service life data: L80/B10 at ambient temperature (ta) 25°C. Rated lamp service life 50,000h. Luminous flux and efficiency specifications are subject to a tolerance of +/- 10%. Min CRI Ra: >80 / >90· Product images are used as an example and may differ from the original · We reserve the right to make changes, insofar as they serve progress. The Single Lighting Regulation (SLR) documentation can be found in our download area. Oktalite Lichttechnik GmbH · Mathias-Brüggen-Str. 73 · 50829 Cologne · T 49 221 59767-0 · F 49 221 59767-40 · mail@oktalite.com · www.oktalite.com · 2023-10-24



CANILO

oktalite

Mounting recessed H12 (Ø 130mm)
 Supply unit separate



LED Luminous Flux Class	Light colour	CRI R _a	system luminous flux*	System performance	Suspension length	Order number		
						white	silver	black
3000 lm	3000 K - Brilliant Colour	97	2700 lm	37 W	1500mm	10226719	10226720	10226721
3000 lm	3000 K - Brilliant Colour	97	2700 lm	38 W	3000mm	10226722	10226723	10226724
4000 lm	2700 K	81	3445 lm	33 W	1500mm	10226725	10226726	10226727
4000 lm	2700 K	81	3445 lm	34 W	3000mm	10226728	10226729	10226730
4000 lm	3000 K	83	3585 lm	33 W	1500mm	10226731	10226732	10226733
4000 lm	3000 K	83	3585 lm	34 W	3000mm	10226734	10226735	10226736
4000 lm	3000 K - Efficient White	94	3560 lm	39 W	1500mm	10226737	10226738	10226739
4000 lm	3000 K - Efficient White	94	3560 lm	41 W	3000mm	10226740	10226741	10226742
4000 lm	3500 K	84	3660 lm	33 W	1500mm	10226743	10226744	10226745
4000 lm	3500 K	84	3660 lm	34 W	3000mm	10226746	10226747	10226748
4000 lm	4000 K - Efficient Cool	91	3805 lm	39 W	1500mm	10249613	10249614	10249615
4000 lm	4000 K - Efficient Cool	91	3805 lm	41 W	3000mm	10249616	10249617	10249618

* System luminous flux based on medium flood reflector.



Efficient White: R_s = 75, R_f = 91, R_g = 102



Brilliant Colour: R_s = 94, R_f = 95, R_g = 104

Technical details as well as weight specifications and measurements have been prepared with care. Errors excepted. All dimensions in mm · LED service life data: L80/B10 at ambient temperature (ta) 25°C. Rated lamp service life 50,000h. Luminous flux and efficiency specifications are subject to a tolerance of +/- 10%. Min CRI Ra: >80 / >90· Product images are used as an example and may differ from the original · We reserve the right to make changes, insofar as they serve progress. The Single Lighting Regulation (SLR) documentation can be found in our download area. Oktalite Lichttechnik GmbH · Mathias-Brüggen-Str. 73 · 50829 Cologne · T 49 221 59767-0 · F 49 221 59767-40 · mail@oktalite.com · www.oktalite.com · 2023-10-24



Optic 85 - LED IQ DALI

oktalite

Optic 3D faceted reflectors
Type interchangeable reflector system

Beam angle				Cover	LOR	Order number		
Spot						white	silver	black
Optik 85 - SP				without	82 %	-	-	10183944
				clear	78 %	-	-	10184576
Höhe [m]	KegelØ [cm]	E(0°) [lx/klm]	E(C0) [lx/klm]					
1	26	5755	2841					
2	52	1439	710					
3	78	639	316					

Beam angle				Cover	LOR	Order number		
Medium Flood						white	silver	black
Optik 85 - MF				without	83 %	-	-	10183959
				clear	79 %	-	-	10184577
Höhe [m]	KegelØ [cm]	E(0°) [lx/klm]	E(C0) [lx/klm]					
1	45	2845	1321					
2	91	711	330					
3	136	316	147					

Beam angle				Cover	LOR	Order number		
Flood						white	silver	black
Optik 85 - FL				without	82 %	-	-	10183953
				clear	78 %	-	-	10184578
Höhe [m]	KegelØ [cm]	E(0°) [lx/klm]	E(C0) [lx/klm]					
1	66	1941	832					
2	132	485	208					
3	197	216	92					

Technical details as well as weight specifications and measurements have been prepared with care. Errors excepted. All dimensions in mm · LED service life data: L80/B10 at ambient temperature (ta) 25°C. Rated lamp service life 50,000h. Luminous flux and efficiency specifications are subject to a tolerance of +/- 10%. Min CRI Ra: >80 / >90 · Product images are used as an example and may differ from the original · We reserve the right to make changes, insofar as they serve progress. The Single Lighting Regulation (SLR) documentation can be found in our download area. Oktalite Lichttechnik GmbH · Mathias-Brüggen-Str. 73 · 50829 Cologne · T 49 221 59767-0 · F 49 221 59767-40 · mail@oktalite.com · www.oktalite.com · 2023-10-24



Optic 85 - LED IQ DALI

oktalite

Optic 3D faceted reflectors
Type interchangeable reflector system

Beam angle				Cover	LOR	Order number																						
Wide Flood						white	silver	black																				
<table border="1"> <thead> <tr> <th colspan="4">Optik 85 - WFL</th> </tr> <tr> <th>Höhe [m]</th> <th>KegelØ [cm]</th> <th>E(0°) [lx/klm]</th> <th>E(C0) [lx/klm]</th> </tr> </thead> <tbody> <tr> <td>1</td> <td>83</td> <td>1522</td> <td>601</td> </tr> <tr> <td>2</td> <td>167</td> <td>381</td> <td>150</td> </tr> <tr> <td>3</td> <td>250</td> <td>169</td> <td>67</td> </tr> </tbody> </table>				Optik 85 - WFL				Höhe [m]	KegelØ [cm]	E(0°) [lx/klm]	E(C0) [lx/klm]	1	83	1522	601	2	167	381	150	3	250	169	67					
Optik 85 - WFL																												
Höhe [m]	KegelØ [cm]	E(0°) [lx/klm]	E(C0) [lx/klm]																									
1	83	1522	601																									
2	167	381	150																									
3	250	169	67																									
				without	82 %	-	-	10183954																				
				clear	78 %	-	-	10184579																				

Beam angle				Cover	LOR	Order number																						
Very Wide Flood						white	silver	black																				
<table border="1"> <thead> <tr> <th colspan="4">Optik 85 - VFL</th> </tr> <tr> <th>Höhe [m]</th> <th>KegelØ [cm]</th> <th>E(0°) [lx/klm]</th> <th>E(C0) [lx/klm]</th> </tr> </thead> <tbody> <tr> <td>1</td> <td>111</td> <td>1067</td> <td>360</td> </tr> <tr> <td>2</td> <td>223</td> <td>267</td> <td>90</td> </tr> <tr> <td>3</td> <td>334</td> <td>119</td> <td>40</td> </tr> </tbody> </table>				Optik 85 - VFL				Höhe [m]	KegelØ [cm]	E(0°) [lx/klm]	E(C0) [lx/klm]	1	111	1067	360	2	223	267	90	3	334	119	40					
Optik 85 - VFL																												
Höhe [m]	KegelØ [cm]	E(0°) [lx/klm]	E(C0) [lx/klm]																									
1	111	1067	360																									
2	223	267	90																									
3	334	119	40																									
				without	82 %	-	-	10183955																				
				clear	78 %	-	-	10184580																				

Technical details as well as weight specifications and measurements have been prepared with care. Errors excepted. All dimensions in mm · LED service life data: L80/B10 at ambient temperature (ta) 25°C. Rated lamp service life 50,000h. Luminous flux and efficiency specifications are subject to a tolerance of +/- 10%. Min CRI Ra: >80 / >90 · Product images are used as an example and may differ from the original · We reserve the right to make changes, insofar as they serve progress. The Single Lighting Regulation (SLR) documentation can be found in our download area. Oktalite Lichttechnik GmbH · Mathias-Brüggen-Str. 73 · 50829 Cologne · T 49 221 59767-0 · F 49 221 59767-40 · mail@oktalite.com · www.oktalite.com · 2023-10-24

Supply unit - LED^{IQ} DALI

DALI driver

oktalite

Version	Independent control gear
Connection type	Pre-wired plug-in connectivity
Mains connection	GST 18i3
Cable length secondary	400 mm
Nominal voltage	220 - 240 V, 50/60Hz
protection	IP20
protection class	I, II
Lighting controls	DALI DT6
Lighting technology	LED ^{IQ} DALI

Lighting technology	Luminaire connection	Output	System performance	max. luminaires B16	Order number
LED IQ DALI	RNV	800 mA	33 W	20	10185637
LED IQ DALI	RNV	800 mA	34 W	20	10185637
LED IQ DALI	RNV	900 mA	37 W	20	10185639
LED IQ DALI	RNV	900 mA	38 W	20	10185639
LED IQ DALI	RNV	950 mA	39 W	20	10185641
LED IQ DALI	RNV	950 mA	41 W	20	10185641

Technical details as well as weight specifications and measurements have been prepared with care. Errors excepted. All dimensions in mm · LED service life data: L80/B10 at ambient temperature (ta) 25°C. Rated lamp service life 50,000h. Luminous flux and efficiency specifications are subject to a tolerance of /- 10%. Min CRI Ra: >80 / >90· Product images are used as an example and may differ from the original · We reserve the right to make changes, insofar as they serve progress. The Single Lighting Regulation (SLR) documentation can be found in our download area. Oktalite Lichttechnik GmbH · Mathias-Brüggen-Str. 73 · 50829 Cologne · T 49 221 59767-0 · F 49 221 59767-40 · mail@oktalite.com · www.oktalite.com · 2023-10-24