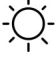





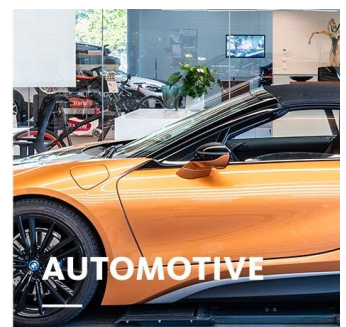
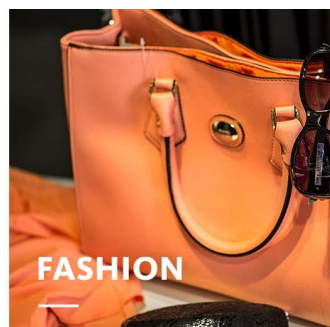


## IDESTO

### RECESSED LUMINAIRES

The IDESTO wallwasher range is expanding, and now has a recessed version in addition to IDESTO TRACK for the optimal illumination of walls, graphics or images. The IDESTO recessed version brings a sense of calm to the ceiling appearance. With its low recess depth, and thanks to swivelling of the luminaire head, the spotlight can be used highly flexibly and is particularly suitable for sales areas with suspended ceilings.

- 
**Uniform light**  
 Newly developed reflector for more uniformity on the target surface – in width and depth
- 
**Easy readjustment**  
 Flexible illumination due to the forward and backward swivelling of the spotlight head of up to 15°
- 
**Quality of light on all merchandise**  
 All standard and special light colours from the Oktalite portfolio can be used
- 
**Simple mounting and removal**  
 Oktalite proprietary folding catch attachment
- 
**Ideally combinable**  
 Wide range of possibilities in interaction with all other accent spotlights from the Oktalite portfolio
- 
**Intelligent light**  
 LED<sup>IQ</sup> for your smart light management



**IDESTO**

[www.oktalite.com/idesto-r](http://www.oktalite.com/idesto-r)

Luminaire type	Recessed luminaires
Application areas	Graphics illumination, wide-area merchandise illumination
Range of action	+/- 15° tiltable
Fastening	Okталite folding spring
Ceiling thickness	1-25 mm
Ceiling cut-out	300 x 90 mm
Lighting technology	LED, LED IQ DALI, LED IQ BLE
Beam angel	Wallwasher
LED luminous flux class	1500 lm - 5000 lm
Light colour CRI 80	2700 K, 3000 K, 3500 K, 4000 K
Light colour CRI 90	3100 K - Brilliant Colour, 3200 K - Efficient White, 4000 K - Efficient Cool
Light colour Food	2700 K - Brilliant Food, Meat, Meat + Fish
Supply unit	Integrated driver
Luminaire colour	RAL 9005 jet black RAL 9016 traffic white Special colours on request
Surface	Structure powder-coated
Nominal voltage	220 - 240 V, 50/60Hz
Weight	approx. 1.3 kg
Test mark	