



## TOKO PLUS

### RECESSED LUMINAIRES

This LED downlight is an ideal partner for the sales floor. The simple design makes TOKO PLUS the favourite. The ceiling-recessed luminaire reliably supplies optionally homogeneous or accentuated light for all groups of goods. Equipped with our unique 3D faceted reflectors, the luminaire with four beam angles provides more possibilities for targeted illumination.



**Four beam angles thanks to 3D faceted reflector**  
Homogeneous or accentuated illumination quite easy: Beam angled of 28°, 38°, 48° and 60°



**Strong luminous flux**  
Up to 5000 lm ideal for rooms with high ceilings



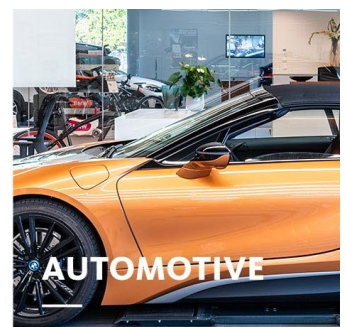
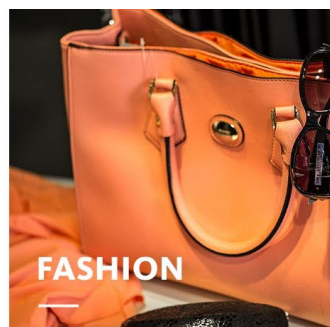
**Well thought-out fastening**  
Our own development for easy assembly



**Large LED selection**  
Six white light colours up to 5000 lm



**Intelligent lighting**  
LED<sup>IQ</sup> for your smart lighting management



## TOKO PLUS

[www.oktalite.com/toko](http://www.oktalite.com/toko)

Luminaire type	Recessed luminaires
application	Base illumination
Range of action	rigid
Fastening	Oktalite folding spring
Ceiling thickness	1-25 mm
Ceiling cut-out	175 mm
Lighting technology	LED, LED IQ DALI, LED IQ BLE
Beam angel	Medium Flood, Flood, Wide Flood, Very Wide Flood
LED luminous flux class	2000 lm - 7000 lm
Light colour CRI 80	2700 K, 3000 K, 3500 K, 4000 K
Light colour CRI 90	3100 K - Brilliant Colour, 3200 K - Efficient White, 4000 K - Efficient Cool
Light colour Food	2700 K - Brilliant Food
Variable light colour	Active (2700 K - 6500 K)
Supply unit	Integrated driver
	RAL 9005 jet black
Luminaire colour	RAL 9006 white aluminum RAL 9016 traffic white Special colours on request
Surface	Structure powder-coated
Nominal voltage	220 - 240 V, 50/60Hz
Weight	approx. 1.2 kg
Test mark	