



## GRADO

### TRACK LIGHTS

GRADO is characterized by the precise large-area wall illumination for graphics, displays or visuals and the systematic illumination of assortment-containing aisles and goods, e.g. on back walls. At the same time, the specially developed rectangular reflector supplies homogeneous or, thanks to a satin-finished pane of glass, also soft light distribution at the edges.

#### Selectable light distribution

- **GRADO graphics reflector** – with a special reflector for rectangular, homogeneous light imaging and sharp edge delimitation for defined surface illumination.



- **GRADO graphic reflector plus a pane of glass** – with special reflector and satin-finished pane of glass for homogeneous lighting images and soft edge delimitation.

#### Flexible applications

- **Vertical illumination of graphics** – Clear illumination of displays and surfaces with sharp or soft edge delimitation



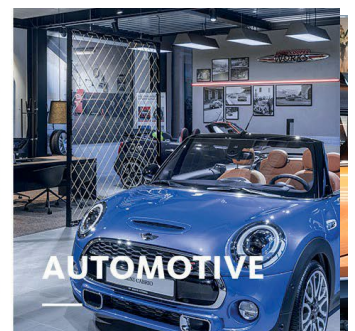
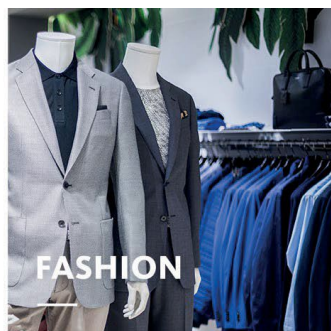
#### High degree of mobility

Tilting through 110° degrees (thereof 20° upwards) and turning through 355° degrees



#### LED<sup>IQ</sup> Intelligent light

LED<sup>IQ</sup> for your smart lighting management



## GRADO

[www.oktalite.com/grado](http://www.oktalite.com/grado)

Luminaire type	Track lights
Application areas	High-level decoration, graphics illumination
Range of action	Can be rotated through 355° and swiveled through 220
Fastening	3P conductor rail, not suitable for vertical mounting
Lighting technology	LED, LED IQ DALI, LED IQ BLE
Beam angle	Wide Flood
LED luminous flux class	2000 lm - 5000 lm
Light colour CRI 80	2700 K, 3000 K, 3500 K, 4000 K
Light colour CRI 90	3100 K - Brilliant Colour, 3200 K - Efficient White, 4000 K - Efficient Cool
Light colour Food	2700 K - Brilliant Food
Supply unit	Integrated driver
Luminaire colour	RAL 9005 jet black
	RAL 9006 white aluminum
	RAL 9016 traffic white
	Special colours on request
Surface	Structure powder-coated
Nominal voltage	220 - 240 V, 50/60Hz
Weight	approx. 1.4 kg
Test mark	