



LIGHTPANEL

TRACK LIGHTS

A sleek look, sophisticated optics, ingenious mechanics, lighter - and up to 12,000 lm: the new generation LIGHTPANEL stands for sustainable lighting quality. With 170 lm/W, the lighting tool scores with maximum efficiency. Whether for ambient lighting, product ranges or aisles: our LIGHTPANEL can handle many retail lighting tasks.



Maximum efficiency

Up to 170 lm/W



High class lighting quality

CRI > 90 across all available light colours



High lumen packages

Up to 12,000 lm for ceiling heights up to 5 meters



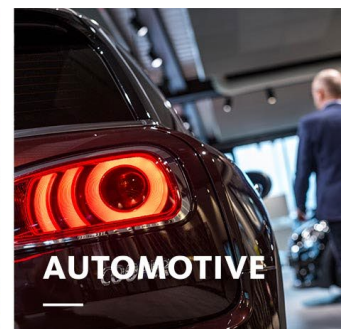
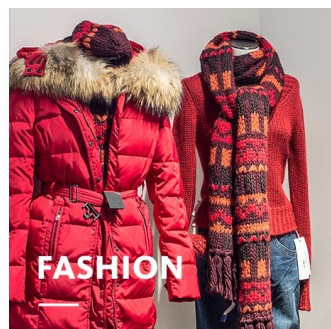
Flexible mounting

Along the conductor rail or rotated by 90



Intelligent light

LED^{IQ} for your smart lighting management, wired or wireless



www.oktalite.com/lightpanel

Luminaire type	Track lights
Application areas	General lighting, aisle zone lighting
Range of action	Absolute parallelism to the busbar (3P2 version) Rotated 90° and fixed to the conductor rail (3P version)
Fastening	3P conductor rail, not suitable for vertical mounting
Lighting technology	LED, LED IQ DALI, LED IQ BLE
Beam angel	Very Wide, Wide, Wide (UGR<19), Double-Asymetric Wide, Double-Asymetric Narrow, Asymetric Narrow
LED luminous flux class	6500 lm - 12000 lm
Light colour CRI 80	3000 K, 3500 K, 4000 K, ACTIVE 2700 - 6500 K
Light colour CRI 90	3000 K, 3500 K, 4000 K
Supply unit	Integrated driver
Luminaire colour	RAL 9005 jet black
	RAL 9006 white aluminum
	RAL 9016 traffic white
	Special colours on request
Surface	Structure powder-coated, polycarbonate (PC)
Nominal voltage	220 - 240 V, 50/60Hz
Weight	approx. 2.0 kg
Test mark	